

NOTES:

1. Unless shown on this plan bracing shall be in accordance with True Steel Frames (TSF) details.

2. All external walls to be load bearing unless noted otherwise (u.n.o.)

3. Unless specified on this drawing, all brick lintels shall be by others.

4. Where blocking between adjacent beam / joist is noted as being required in member schedule, provide C9075 stud or ceiling batten material @ 1500 crs max, 2,10g tek screws each end.

5. Do not scale this drawing. All dimension, etc. to be taken from architectural plans, and where structural steel is required to be checked on site prior to fabrication.
6. All steelwork to be coated using inorganic zinc silicate, with exposed members to additionally be painted using Solver Duraguard (or similar).

7. All welds to be 6mm CFW (u.n.o.).

8. All hot rolled sections to be Grade 300 Plus. All SHS members to be G350 (min).

9. Bottom plates welded to beams / risers: weld 300mm each end, then miss 100mm, hit 100mm.

10. Provide 10mm web stiffener to beams where supporting columns/beams over.

LEGEND

- ▲

1/C9075 wall stud
- ✕

2/C9075 wall stud (JC)
- 2/C9075 boxed studs (JC)
- Boxed C-sections
- ▨

Internal steel-framed load bearing wall
- ▤

Stair / plumbing voids
- Wet areas (floor joists set down to suit)
- 1.8

5.0mm thick Hardie Brace as per manufacturers specification. (not shown to scale on plan)
- 1.8

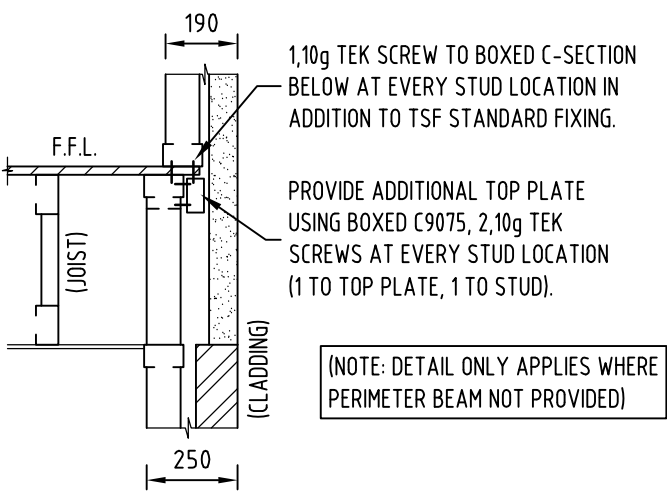
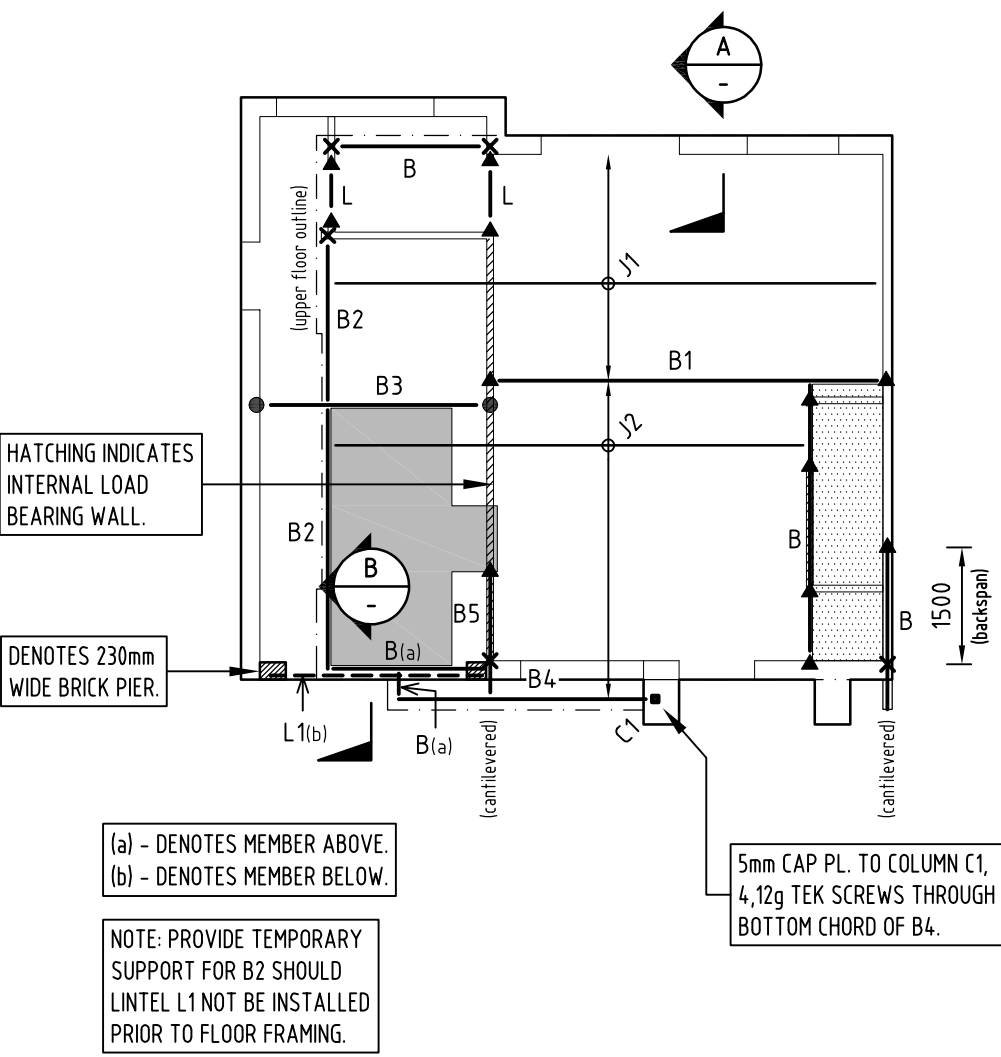
30x1.0mm thick metal Strap Cross-Brace as per TSF details (not shown to scale on plan.)
- PI

Sheet-Brace as per TSF details.
- K

K-Brace as per TSF details.

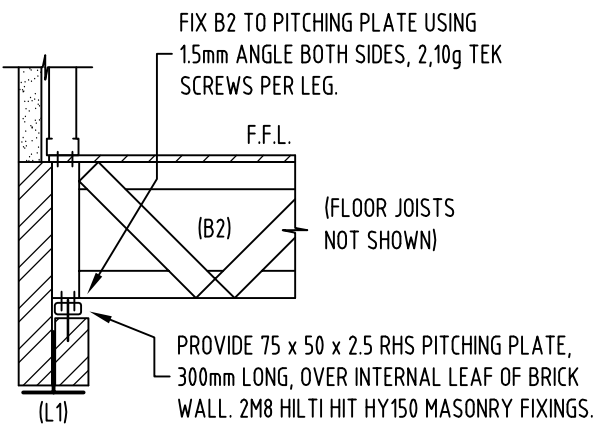
NOTE: DWELLINGS 3 + 4 ASSUMED TO ACT AS ONE FOR STABILITY (IN THIS DIRECTION '↔' ONLY).

NOTE: UNLESS NOTED OTHERWISE, BRICK LINTEL BY OTHERS.



SECTION A
SCALE: N.T.S.

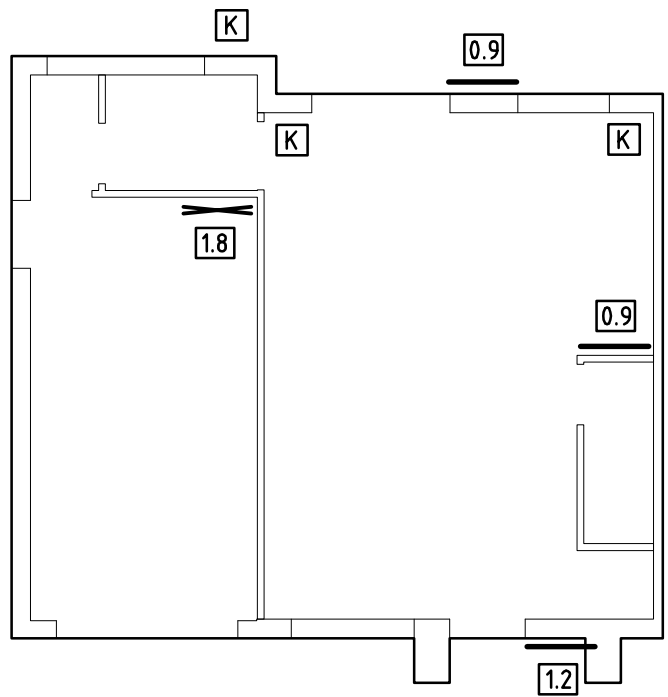
TYPICAL DETAILS OF SUPPORT FOR UPPER FLOOR EXTERNAL WALL



SECTION B
SCALE: N.T.S.

MEMBER SCHEDULE

MARK	SIZE	REMARKS
J1	TSF4575 (BOXED TOP CHORD) @ 600 CRS MAX	STANDARD TSF JOISTS. REFER TO TSF DETAILS.
J2	TSF4575 @ 600 CRS MAX (450 CRS TO WET AREAS)	STANDARD TSF JOISTS. REFER TO TSF DETAILS.
B	1/TSF4575	REFER TO TSF DETAILS SK10.
B1	1/TSF4575 (BOXED TOP CHORD)	REFER TO TSF DETAILS SK10.
B2	2/TSF4575	REFER TO DOUBLE JOIST DETAIL JD1. / 1.5mm ANGLE BOTH SIDES, 5,10g TEK SCREWS EACH LEG TO B3. REFER TO SECTION B.
B3	2/C20024 □	
B4	1/TSF4510	REFER TO TSF DETAILS SK10.
B5	1/TSF4575 (BOXED T&B CHORDS)	REFER TO TSF DETAIL SK10. / 1.5mm ANGLE BOTH SIDES, 5,10g TEK SCREWS EACH LEG TO B4.
L		STEEL LINTEL TO TSF DETAILS.
L1	200 x 10mm RISER 200 x 10mm PLATE	T-LINTEL - MIN. 200m END BEARING ON BRICK PIER.
C1	89 x 89 x 2.0 SHS	BASE CONNECTION AS PER TSF DETAIL SK11.



GROUND FLOOR BRACING PLAN
(THIS DIRECTION '↔' ONLY)

Rev.	Remark / Comment	Date
-	Issued for Approval / Construction	11.10.2019

AUSTRUCT

Consulting Engineers

A.B.N. 90 627 866 022

Phone: 0403 244 681

Email: stathi@austructconsulting.com.au

TRUE STEEL FRAMES
PROPOSED DWELLING
FOR: COSCIA
AT: No. 4 REDWOOD STREET, ROSTREVOR (DWELLING 4)
FIRST FLOOR FRAMING PLAN

Design: A.N.	Scale (A3)
Drawn: A.N.	1:100
Date: OCT'19	
Job No.	Drg. / Rev.
19/177-4	ST1